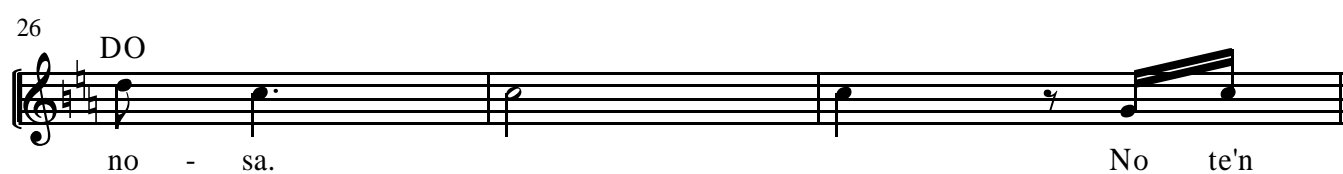
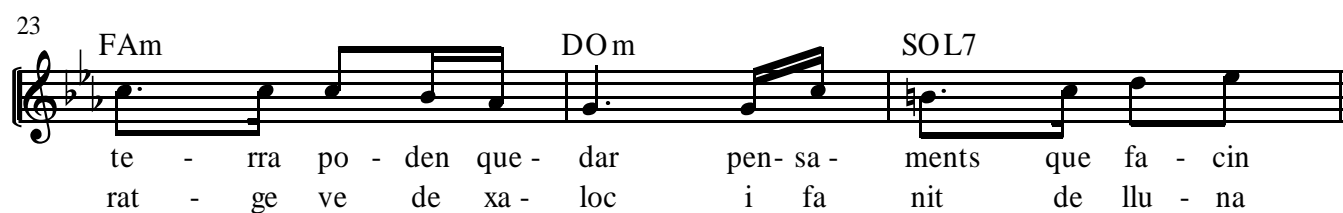
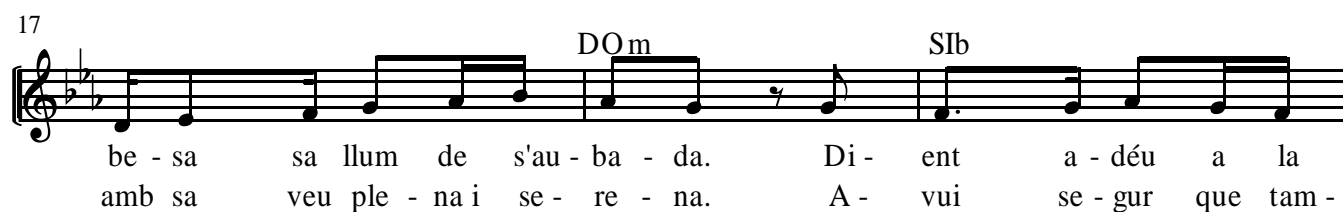
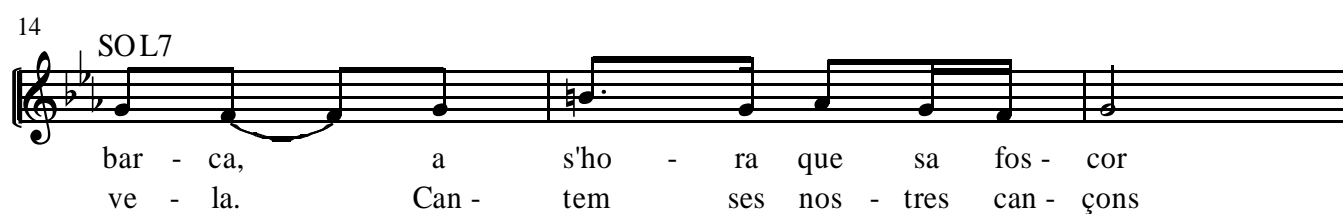
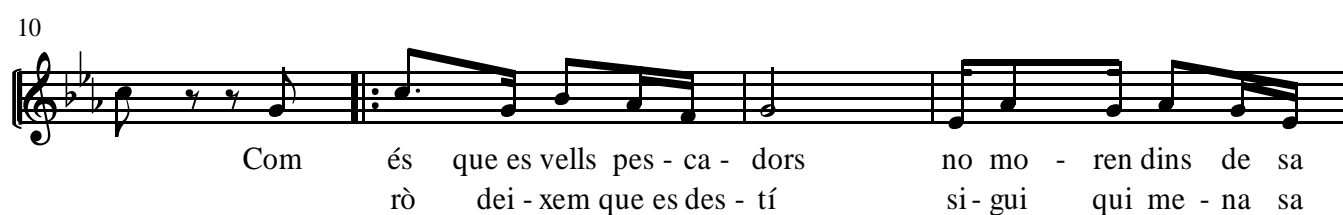


LLUNA PLENA

Lletra: TÒFOL MUS


(Havanera)

Música: JOSEP BASTONS



29

SOL7 DO RE7



va - gis en - ca - ra com - pany, poc a poc, can - ta - rem sa da -
va - gis en - ca - ra com - pany, poc a poc, can - ta - rem sa da -

32


SOL7



rre - ra. Len - ta - ment, re - tar - dant es com - pàs, tan - ma -
rre - ra. Len - ta - ment, re - tar - dant es com - pàs, tan - ma -

35

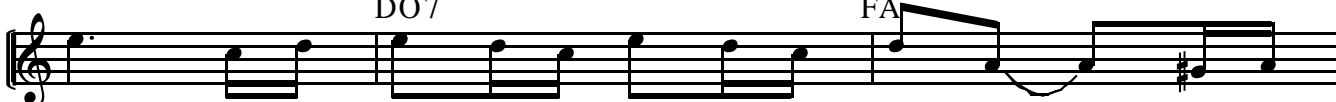
DO



teix ja nin - gú mos es - pe - ra. I des - prés bai - xa - rem cap as
teix ja nin - gú mos es - pe - ra. Mal - grat tot, si a - rri - bam fins as

38


DO7 FA



port, vol - te - jant, pas a pas, sa vo - re - ra. O - bri -
moll on des - can - sen ses bar - ques i nan - ses, comp - ta -

41


SOL7 DO SOL7



rem es ca - laix des re - cords, sols des bons, es do - lents
rem quan - tes n'hi ha que mai més, com tu i jo, pes - ca - ran

44

DO DOm¹



dei - xen pe - na. Pe -
es - pe - ran - ces.

47


FAm² DO SOL7



No te'n va - gis en - ca - ra com - pany, que te - nim a - vui nit

51

DO



llu - na ple - na.